

YARNS

PATTERNS

STORE LOCATOR

Home / Patterns / Pull Candy











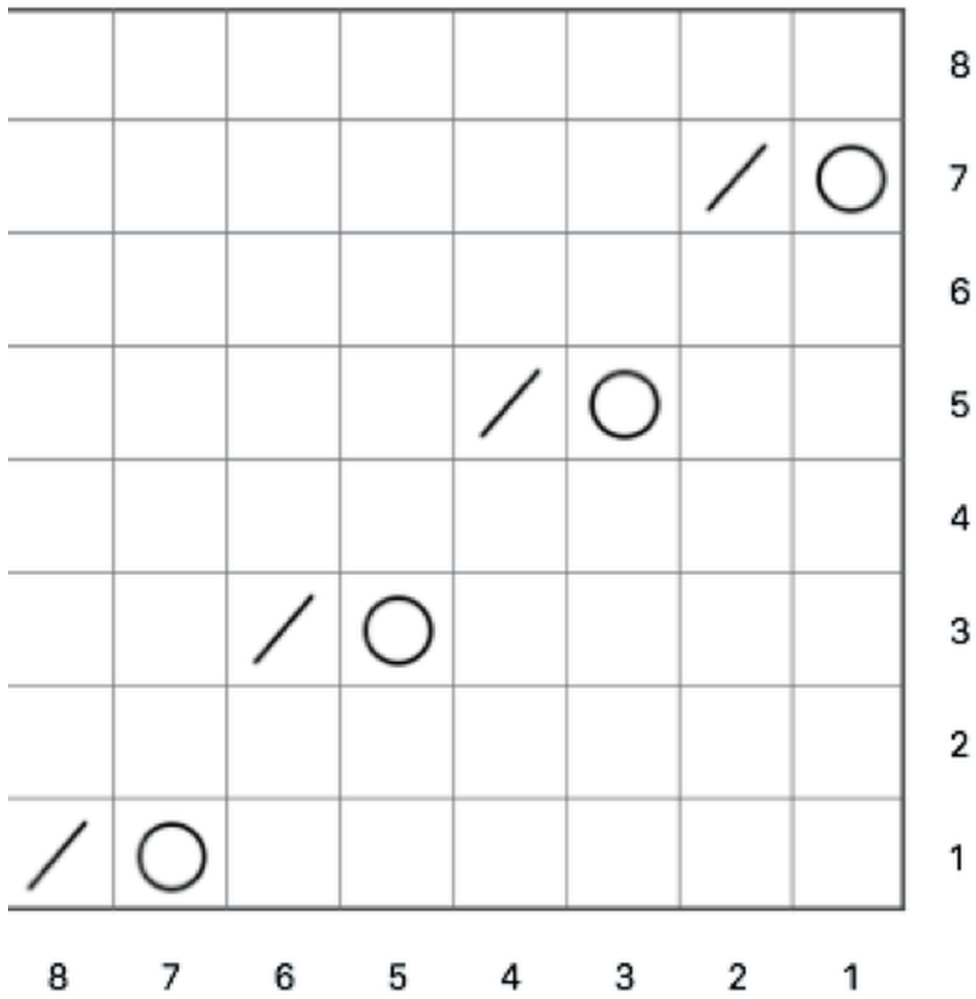




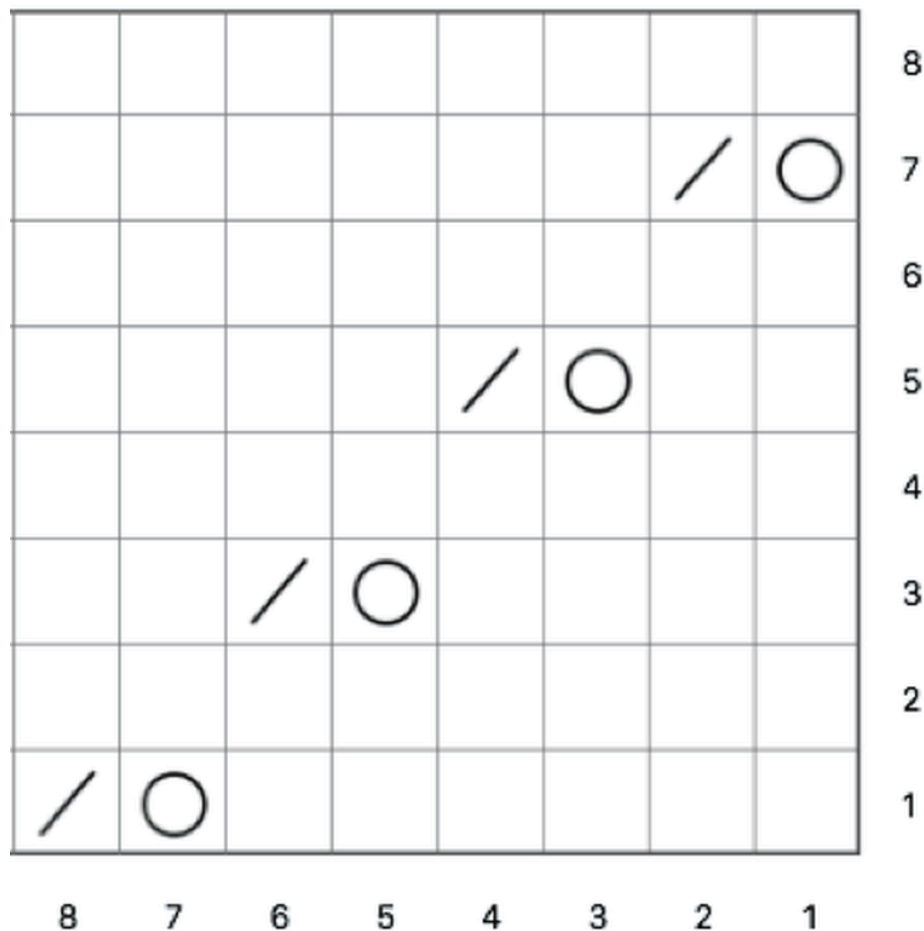




EMA A



IT A



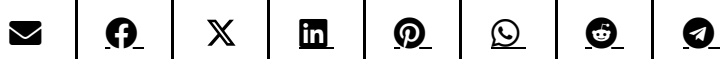
Pull Candy

YARN = "Poema" by "Laines du Nord": Color 220:
2 balls

CIRCULAR NEEDLES = 3,5 and 4 mm (cables 100 cm and 60 cm for sleeves)

OTHER = stitch markers, tapestry needle.

SHARE:



DESCRIPTION



This tee is worked in the round from the top down, with circular yoke.

POINTS USED

Stocking stitch;

1/1 rib st: All rounds: *K2, P2 * rep ** to the end.

ABBREVIATIONS

st(s)= stitch(es);

SM= stitch marker;

SMb= stitch marker of the beginning of the round;

sSM= slip SM;

K = knit;

P = purl;

RS = right side;

WS =wrong side;

K2tog = knit 2 sts together;

SKP= slip 1, K1, pass slipped stitch over;

YO = yarn over

m1 = make one by picking up one a loop between two stitches and knitting into the back of the new stitch.

rep **= repeat from * to *

MEASURES

SIZES - S (M,L)

MEASURES OF THE FINISHED GARMENT:

Size S

Bust circumference: 91 cm



Size in photos: M

Bust circumference: 100 cm

Size L

Bust circumference: 110 cm

ARM CIRCUMFERENCE**Size S:** 31 cm**Size L:** 33 cm**Size M:** 37 cm

[DOWNLOAD PDF](#)[DOWNLOAD PDF](#)

Procedure

YOKE

With **needles 3,5mm** cast on 104 (108, 114) 1 sts, insert the marker to mark beginning of row, **SMb**, and start to work in the round ensuring that the work is not twisted (to join in the round: Ktog the first and the last cast-on stitch). [= 104 (108, 114) sts]

Rounds 1 - 10: * K1, P1 * rep** to the end.

Change to needles 4 mm

Rounds 11 - 13: K all sts

Round 14: K and increase evenly 28 (36, 42) sts (= m1). [132 (144, 156) sts]

Rounds 15 -16: K all sts



Rounds 17 - 24: follow **CHART A** from right to left

Rou

nds 25 - 27: K all sts

Round 28: K and increase evenly 48 (48, 52) sts (m1) [180 (192, 208) sts]

Rounds 29 - 31: K all sts

Round 32: P all sts

Round 33: * K2tog, YO * rep** to the end

Round 34: P all sts

Rounds 35 - 38: K all sts

Round 39: K and increase evenly 48 (48, 44) sts (m1) [228 (240, 252) sts]

Rounds 40 - 42: K all sts

Rounds 43 - 50: follow **CHART A** from right to left

Rounds 51 - 53: K all sts

Round 54: * K3, m1 *. [304 (320, 336) sts]

Rounds 55 - 68: K all sts

Rounds 69: K and increase evenly 64 (80 , 104) sts (m1)[368 (400, 440) sts]

Rounds 70 - 77 : K all sts

Only size L: K 5 rounds

Place the sts for each sleeve onto holder or scrap yarn:

Place the first 74 (80, 88) sts onto holder or scrap yarn (first sleeve), K 110 (120, 132) (front), place 74 (80, 88) sts onto holder or scrap yarn (second sleeve), K 110 (120, 132) (back).



Body sts: 220 (240, 264)

Body

Round 1: K 110 (120, 132), SM (side), K 110 (120, 132).

Decrease round: K2tog, K to 3 sts before SM, SKP, K1, sSM, K2tog, K to 3 sts before end, SKP, K1.

K 12 rounds

Decrease round: K2tog, K to 3 sts before SM, SKP, K1, sSM, K2tog, K to 3 sts before end, SKP, K1.

K 12 rounds

Decrease round: K2tog, K to 3 sts before SM, SKP, K1, sSM, K2tog, K to 3 sts before end, SKP, K1.

K 40 (42, 46) rounds

Hem

Round 1: P

Round 2: * K2tog, YO * rep** to the end

Round 3: P

Rounds 4,5,6 : K

Repeat from Row 1 to Row 6 one more time

Change to needles 3.5 mm

Work 10 rounds 1/1 rib st: * K1, P1 * rep** to the end.

Cast off all sts

SLEEVES

Slip the **74 (80, 88)** held **stitches** from holderto **4 mm needles**. Place the **SM** in the center of the underarm sts and start working in the round. [74 (80, 88) sts]

Round 1: P

Round 2: * K2tog, YO * rep** to the end



Round 3: P

K 54 (54, 56) rounds

Work 6 rounds in 1/1 rib sr: * K1, P1 * rep to the end**

Loosely cast off.

MAKE THE SECOND SLEEVE.

Weave in all ends. Wash and block garment carefully.

